

JONES - PARCEL "C"

0683-002

169

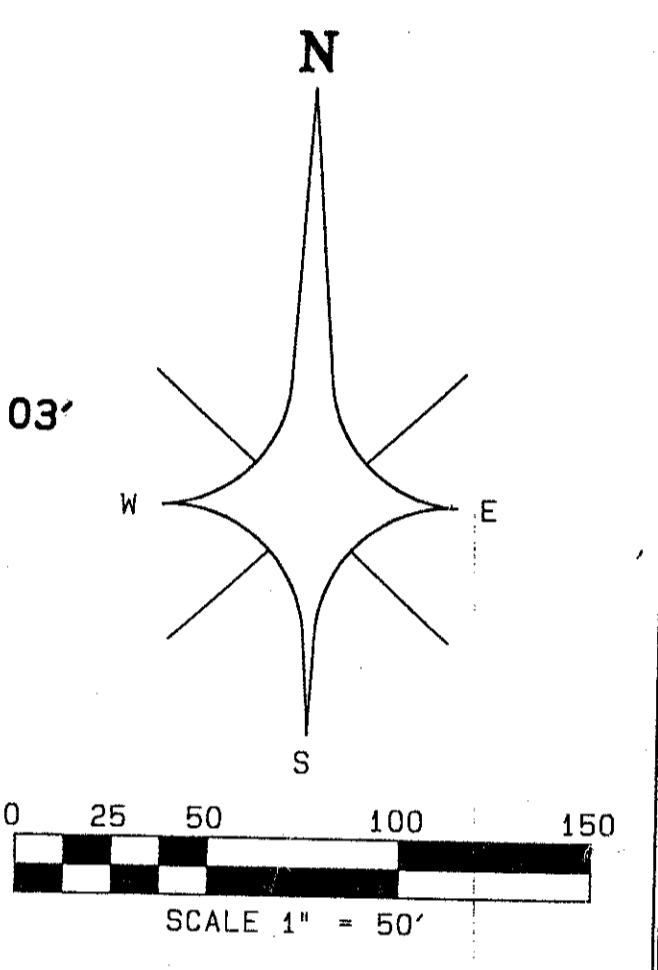
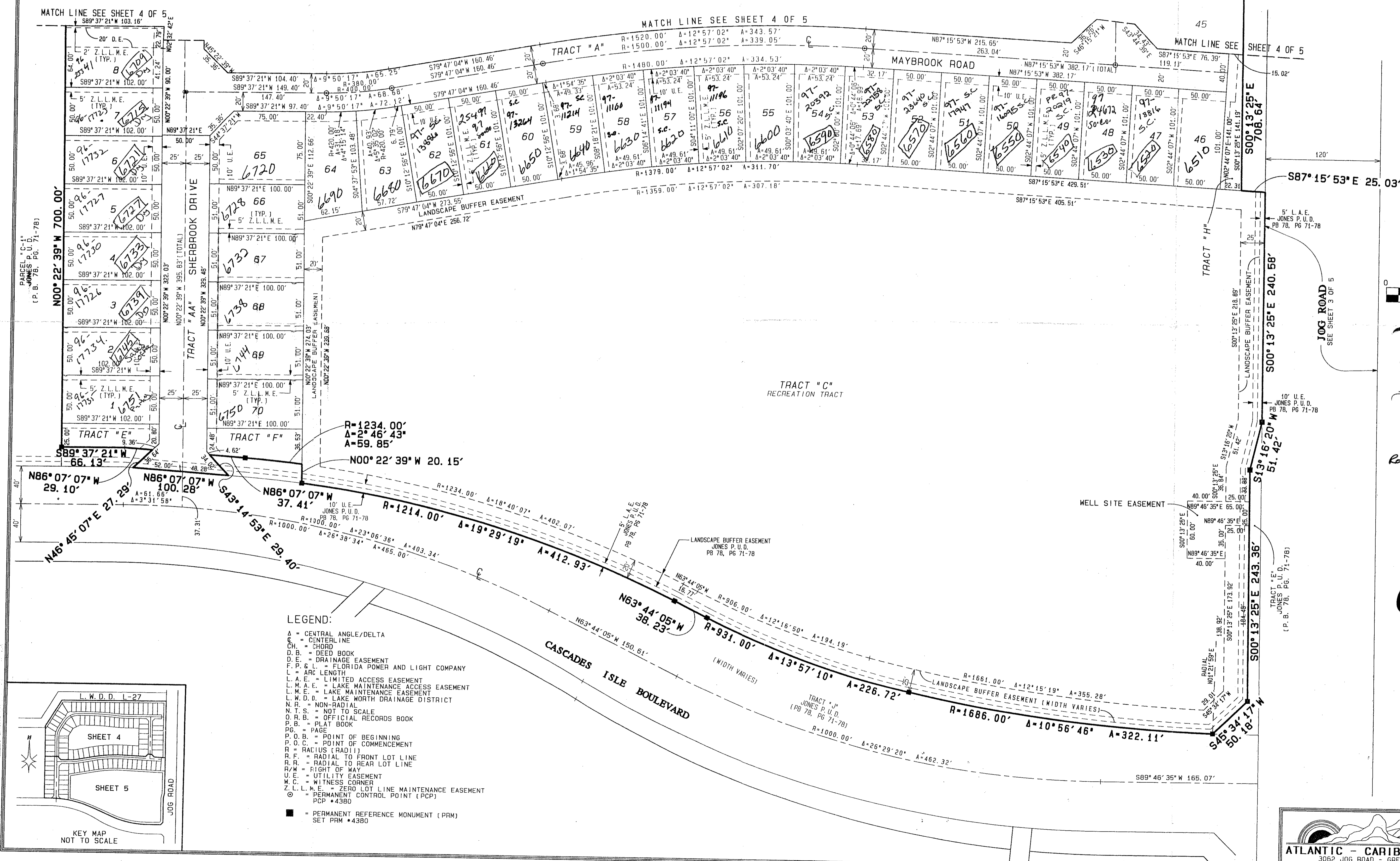
BEING A REPLAT OF PARCEL "C", JONES P.U.D. AS RECORDED IN PLAT BOOK 78, PAGES 71 THROUGH 78 OF THE PUBLIC RECORDS OF PALM BEACH COUNTY, FLORIDA SITUATE IN SECTIONS 33 AND 34, TOWNSHIP 45 SOUTH, RANGE 42 EAST, PALM BEACH COUNTY, FLORIDA

SHEET 5 OF 5

NOVEMBER 1996

STATE OF FLORIDA }
 COUNTY OF PALM BEACH } SS
 THIS PLAT WAS FILED FOR
 RECORD AT _____ DAY OF
 THIS _____ MONTH OF
 1996 AD. 1996 AND
 DULY RECORDED IN PLAT BOOK
 _____ ON PAGES _____ AND

 DOROTHY H. WILKEN, CLERK
 CIRCUIT COURT
 BY: _____ DC

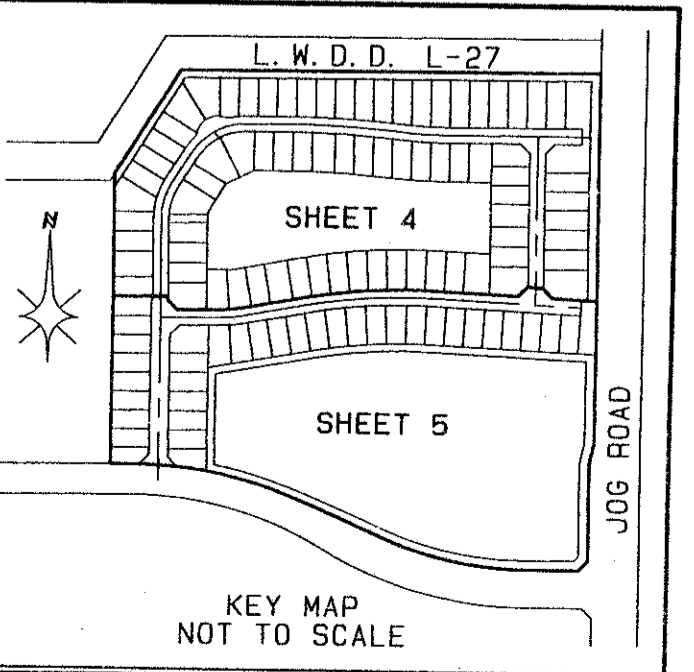


Pet 95-19
No Schools
Restrictive
Covenant
5/3/3/K
Roads 5 mf 990⁰⁰ PER UNIT
SF 1320⁰⁰ PER UNIT

78-169

0683-002.

- LEGEND:
- A = CENTRAL ANGLE/DELTA
 - C.L. = CENTERLINE
 - CH. = CHORD
 - D.B. = DEED BOOK
 - D. = DRAINAGE EASEMENT
 - F.P.C. = FLORIDA POWER AND LIGHT COMPANY
 - L. = ARC LENGTH
 - L.A.E. = LIMITED ACCESS EASEMENT
 - L.M.A.E. = LAKE MAINTENANCE ACCESS EASEMENT
 - L.M.E. = LAKE MAINTENANCE EASEMENT
 - L.W.D.D. = LAKE WORTH DRAINAGE DISTRICT
 - N.T.S. = NOT TO SCALE
 - O.P.B. = OFFICIAL RECORDS BOOK
 - P.B. = PLAT BOOK
 - P.C. = PAGE
 - P.O.B. = POINT OF BEGINNING
 - P.O.C. = POINT OF COMMENCEMENT
 - R. = RADIUS (RADII)
 - R.F. = RADIAL TO FRONT LOT LINE
 - R.R. = RADIAL TO REAR LOT LINE
 - R/W. = RIGHT OF WAY
 - U.E. = UTILITY EASEMENT
 - W.C. = WITNESS CORNER
 - Z.L.L.M.E. = ZERO LOT LINE MAINTENANCE EASEMENT
 - ⊙ = PERMANENT CONTROL POINT (PCP)
 - PCP #4380
 - = PERMANENT REFERENCE MONUMENT (PRM)
 - SET PRM #4380



SUBDIVISION * JONES
 BOOK 78
 FLOOD ZONE B
 ROAD #50
 SHEET 169
 FLOOD MAP #200A
 ZONING PDD
 ZIP CODE 33487
 SUBD NAME JONES

PROFESSIONAL SURVEYORS AND MAPPERS
ATLANTIC - CARIBBEAN MAPPING, INC.
 3062 JOG ROAD - GREENACRES, FLORIDA 33467
 (561) 964-7884, FAX (561) 964-1969